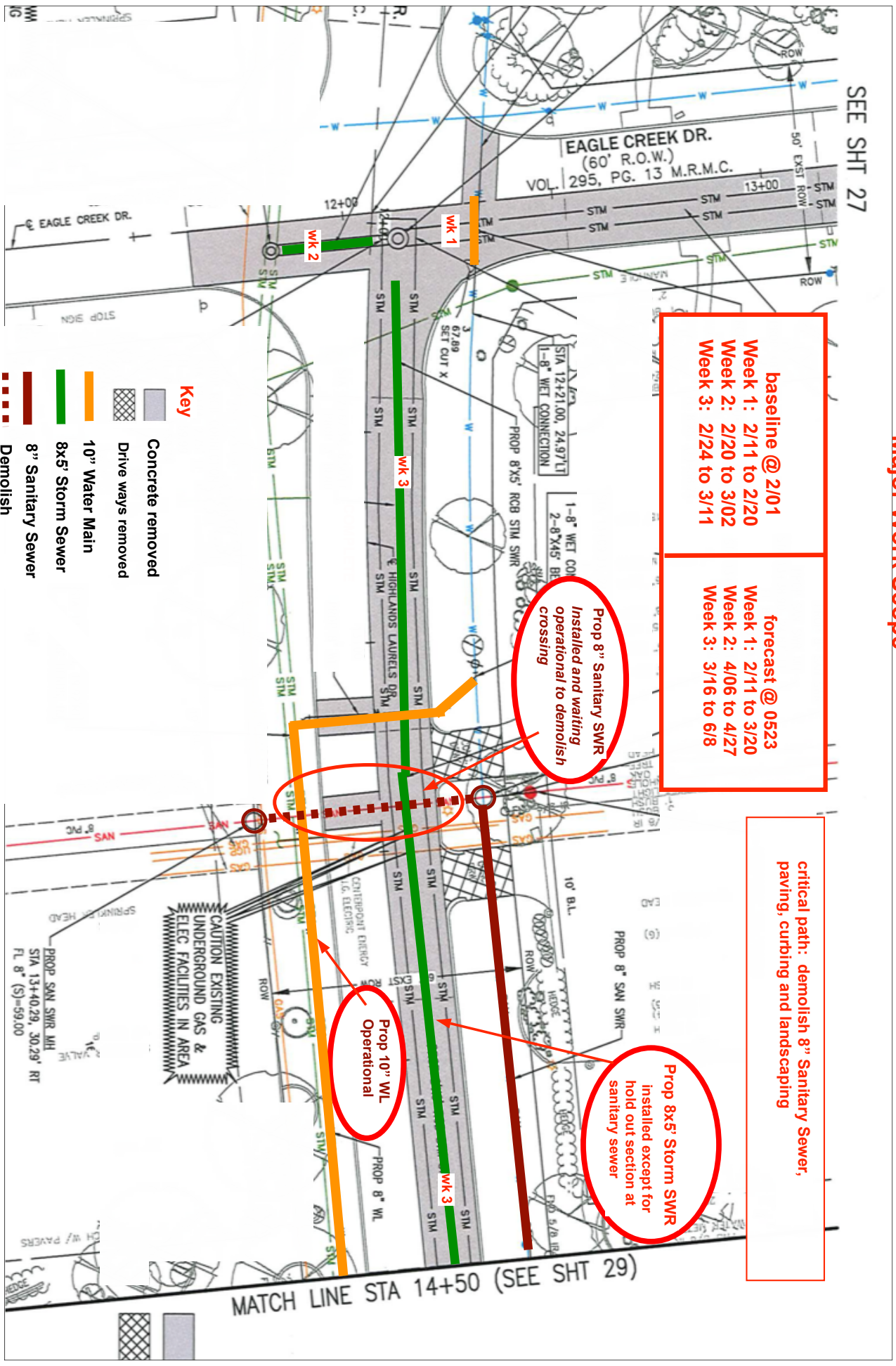


Eagle Creek to Highland Laurels

**Weeks 1, 2 and 3
Major Work Scope**

Report and Update for May 23, 2026



- Key**
- Concrete removed
 - Drive ways removed
 - 10" Water Main
 - 8x5" Storm Sewer
 - 8" Sanitary Sewer
 - Demolish

critical path: demolish 8" Sanitary Sewer, paving, curbing and landscaping

Prop 8" Sanitary SWR installed and waiting operational to demolish crossing

Prop 8x5" Storm SWR installed except for hold out section at sanitary sewer

Prop 10" WL Operational